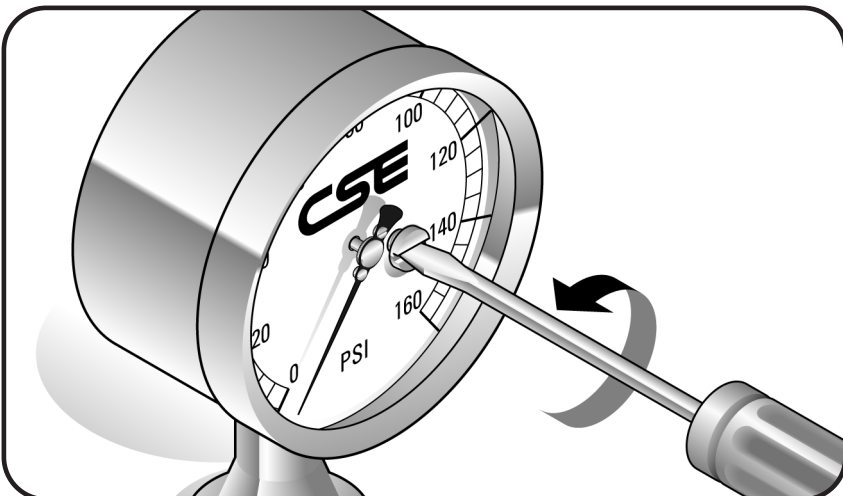


# CSE<sup>TM</sup> Chicago Stainless Equipment

## Sanitary Pressure Gauges Re-Zeroing Procedure

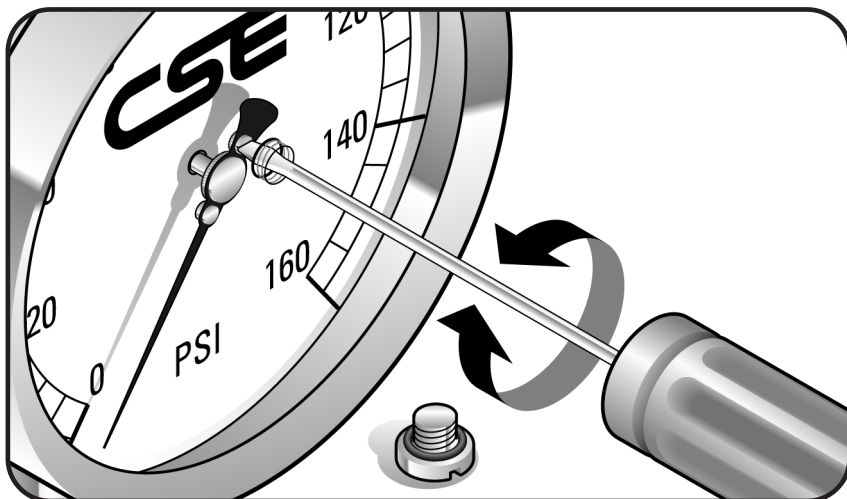
If upon receipt of this gauge the pointer is not indicating Zero, (generally caused by changes in temperature, elevation or barometric pressure) simply follow these directions:



### STEP 1

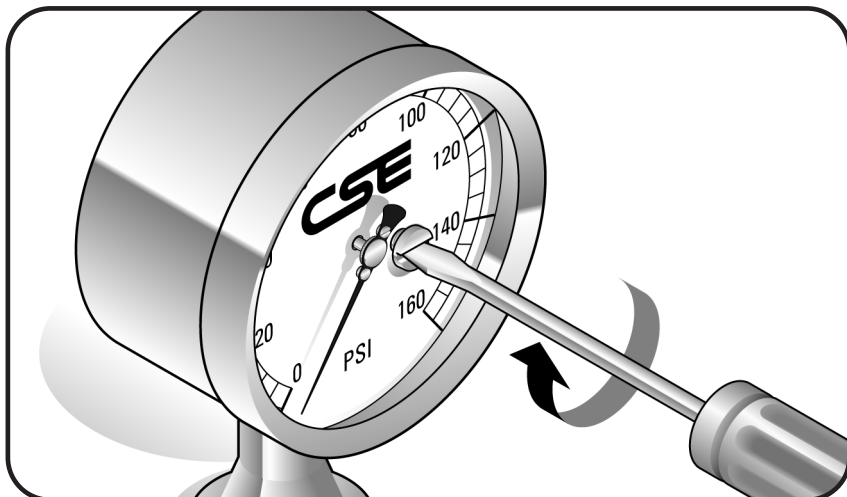
**Remove** the screw in the lens using a large flat bladed screwdriver.

*Please Note: A drop or two of liquid may drip out.*



### STEP 2

**Insert** a *small* bladed screwdriver into the hole in the lens. **Correct** the pointer position by adjusting the screw on the pointer. If the screw can not be reached, temporarily remove the lens to allow access. Then reassemble gauge.



### STEP 3

**Replace** screw in lens using a *large* bladed screwdriver.

*Please Note: If recalibration is necessary, it is recommended that the gauge be returned to the factory where it will be completely rebuilt and calibrated to original specifications.*

