

CSE CHICAGO STAINLESS EQUIPMENT, INC

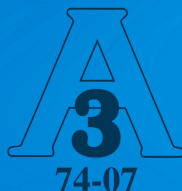
INSTA-FLOW

INDUSTRIAL PRESSURE GAUGES



QUALITY PRODUCTS SINCE 1937

www.ChicagoStainless.com



Member of
fisa
Promoting Distribution
Hygienic Processing

CSE INDUSTRIAL PRESSURE GAUGES

Since 1937, Chicago Stainless Equipment has been manufacturing Sanitary Equipment for the food industry. We have taken these many years of experience and knowledge and applied it into the engineering and design of a pressure gauge that is *extremely* durable yet accurate. CSE's Industrial Pressure Gauges are constructed with an *all* stainless steel case, socket, tube and movement. This pressure gauge is perfect for process lines that need the hygienic aspect of stainless steel, without the cleanability that comes from a diaphragm on a Sanitary Pressure Gauge. All of our pressure gauges are built to withstand harsh environments and function for many years with little to no maintenance.

Our dedication to quality is not only evident in our products, but also in our customer service. CSE commits to offering the highest level of product and resources to every customer. We provide efficient, quick, and friendly service along with striving to build relationships with all of our partners.

FEATURES

316L Stainless Steel Construction

On all wetted surfaces assures maximum corrosion resistance

304L Stainless Steel Case

For durability even in the harshest environments

Waterproof Consutruction

Allows gauge to be submersed for cleaning

Clean-in-place (CIP)

Can be cleaned in place for convenience and to eliminate the possibility of damage from mishandling

Pressure Ranges

Available from 15 psi up to 23,000 psi. Also available in vacuum ranges.

Dial Face Sizes

Available in 2½", 4" or 6"

True Zero

Standard on all gauges. The pointer is not pinned at zero and there is not a large zero block. This lets the operator know the pressure is truly zero and gives the most accurate pressure reading available.

Re-Zero Feature

Optional on all gauges

Glycerin Fill

Standard to protect the gear mechanism against wear and vibration

176°F Maximum Process Temperature

-20° to 80°C

CSE INDUSTRIAL PRESSURE GAUGES

SPECIFICATIONS

TOLERANCES :

Accuracy (2½" Dial)	<i>+/- 1.5% of Full Scale (Grade B)</i>
Accuracy (4" Dial)	<i>+/- 1% of Full Scale (Grade 1A)</i>
Accuracy (6" Dial)	<i>+/- 1% of Full Scale (Grade 1A)</i>
Over-Range Capability	<i>25% Over Range</i>
Repeatability	<i>+/- 0.5% of Full Scale</i>
Linearity	<i>+/- 0.5% of Full Scale</i>
Hysteresis	<i>+/- 0.5% of Full Scale</i>
Process Temperature Range	<i>-4° to 176°F (-20° to 80°C)</i>
Ambient Operating Limits	<i>-40° to 140°F (-40° to 60°C)</i>
Ambient Storage Limits	<i>-40° to 250°F (-40° to 121°C)</i>

CONSTRUCTION :

Available Dial Face Sizes	<i>2½" (63mm), 4" (100mm), 6" (160mm)</i>
Connection Type	<i>1/4" & 1/2" NPT Male</i>
Compliance	<i>3-A, Nema 4X, IP67, ISO 9001:2015</i>
Product Contact Material	<i>316L Stainless Steel</i>
Case and Lens Ring Material	<i>304L Stainless Steel</i>
Standard Lens Material (2½")	<i>Polycarbonate: 1/4" Thick (6.4mm)</i>
Standard Lens Material (4")	<i>Shatter-Resistant Laminated Glass</i>
Standard Lens Material (6")	<i>Shatter-Resistant Laminated Glass</i>
Dial Face	<i>Aluminum Printed with UV Inks (No Stickers)</i>
Bourdon Tube	<i>Phosphor Bronze</i>
Re-Zero Adjustment	<i>Optional - 100% of Span</i>
Standard Case Fill	<i>99.5% USP Food Grade Glycerin</i>
Approximate Shipping Weight (2½")	<i>1 Pound (0.5 Kg)</i>
Approximate Shipping Weight (4")	<i>2 Pounds (1.0 Kg)</i>
Approximate Shipping Weight (6")	<i>4 Pounds (1.8 Kg)</i>

CSE INDUSTRIAL PRESSURE GAUGES

OPTIONS

AVAILABLE RANGES (PSI)

0 to 15	30"Hg to 0
0 to 30	30"Hg to 15
0 to 60	30"Hg to 30
0 to 100	30"Hg to 60
0 to 160	30"Hg to 100
0 to 200	30"Hg to 150
0 to 300	30"Hg to 200
0 to 400	30"Hg to 300
0 to 600	
0 to 1,000	
0 to 1,500	
0 to 2,000	
0 to 3,000	
0 to 5,000	
0 to 6,000	
0 to 10,000	
0 to 14,500	6" Dial only
0 to 23,000	6" Dial only

* Available in Single or Dual Scale

OTHER AVAILABLE RANGES

BAR
kg/cm²
Kilopascal
Megapascal
Tons/Ft²
Atmospheres

MOUNT STYLES

Bottom Mount
Center Back Mount 2½" and 4" Dial only
Left Side Mount
Right Side Mount
Top Mount
Front Flange Panel Mount 2½" and 4" Dial only

AVAILABLE FITTINGS

1/2" NPT 4" and 6" Dial only
1/4" NPT 2½" and 4" Dial only

CASE FILL OPTIONS

Glycerin Fill * *Standard* *
No Fill
Mineral Oil Fill
Silicone Fill
Propylene Fill

DIAL FACE SIZES

2½" (63mm)
4" (100mm)
6" (160mm)

ADDITIONAL OPTIONS

2½" Glass Lens
4" Polycarbonate Lens
6" Polycarbonate Lens
Custom Color Ranged Dial Face
Re-Zero Feature (Polycarbonate Lens only)

Paper Tag
Stainless Steel Tag
Oxygen Cleaned 3 piece minimum
High Visibility Dial Face - Yellow
High Visibility Dial Face - Green

General Calibration Certificate
Detailed Calibration Certificate
Certificate of Conformity
Animal Derived Ingredient Free Certificate

CSE INDUSTRIAL PRESSURE GAUGES

VISIT OUR WEBSITE

www.ChicagoStainless.com



Configurators ▼

Our website has an extremely user friendly configurator where you can build a product step by step exactly how your application may need.

Products

View our full product line.

Find a Distributor

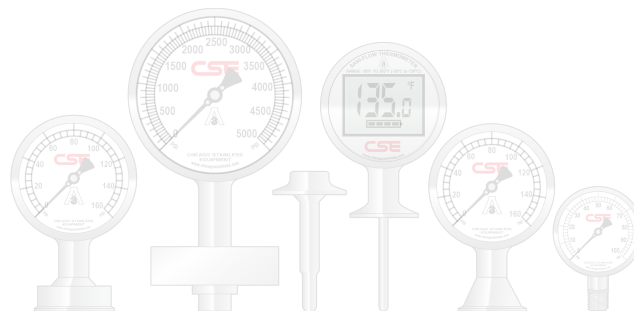
Use our CSE Distributor Locator for help locating a distributor in your area.

CONTACT US

Office Hours: Monday - Friday 8:00am to 5:00pm (EST)

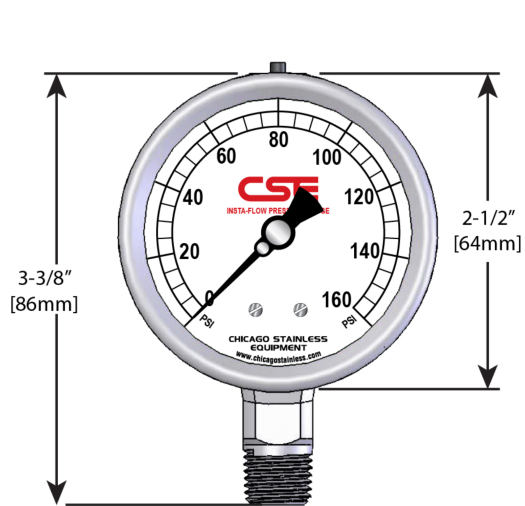
Office Phone: 772-781-1441

Email: Sales@ChicagoStainless.com

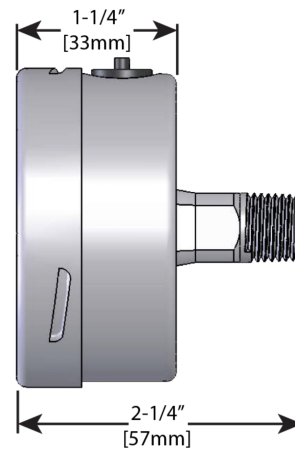
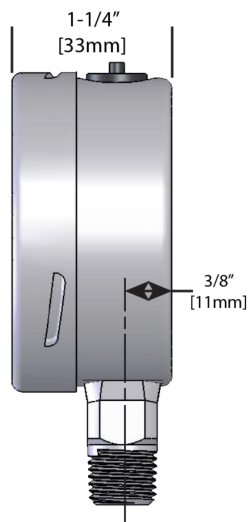


CSE

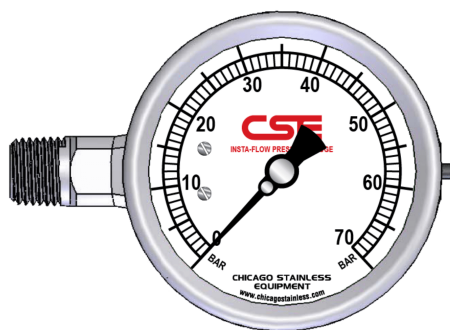
CHICAGO STAINLESS EQUIPMENT, INC.
QUALITY PRODUCTS SINCE 1937



2-1/2" BOTTOM MOUNT



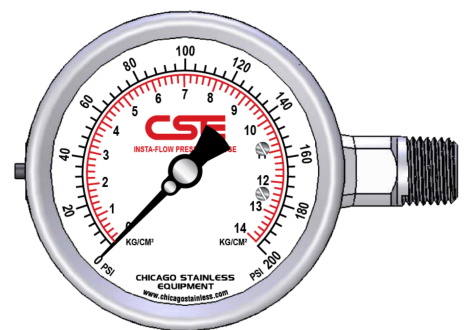
2-1/2" BACK MOUNT



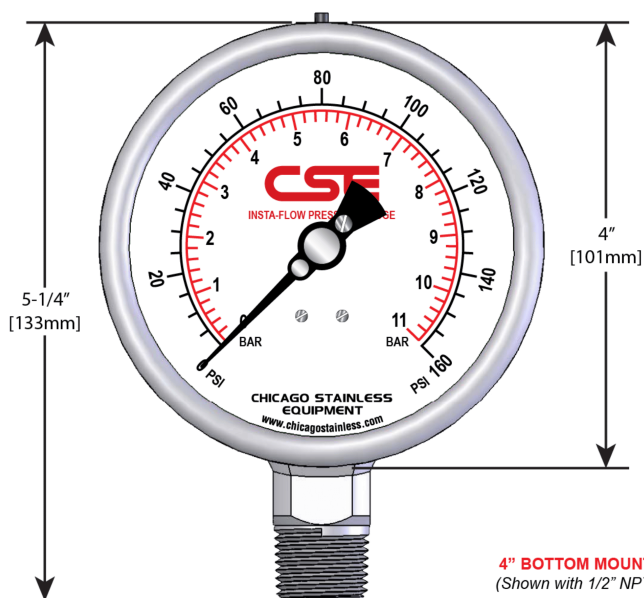
2-1/2" LEFT SIDE MOUNT



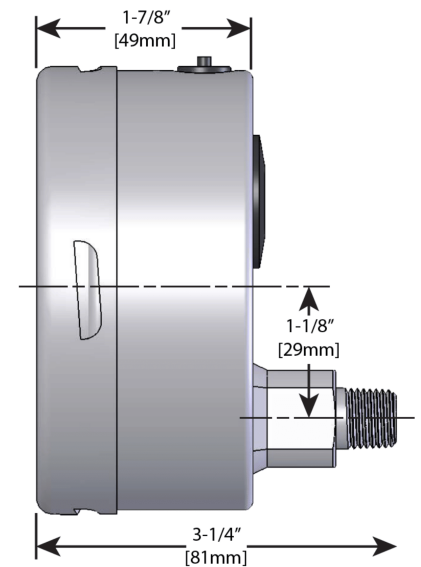
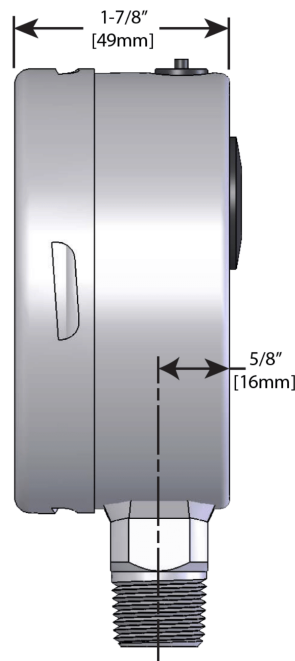
2-1/2" TOP MOUNT



2-1/2" RIGHT SIDE MOUNT



4" BOTTOM MOUNT
(Shown with 1/2" NPT)



4" BACK MOUNT
(Available with 1/4" NPT only)

Front Flange Panel Mount

